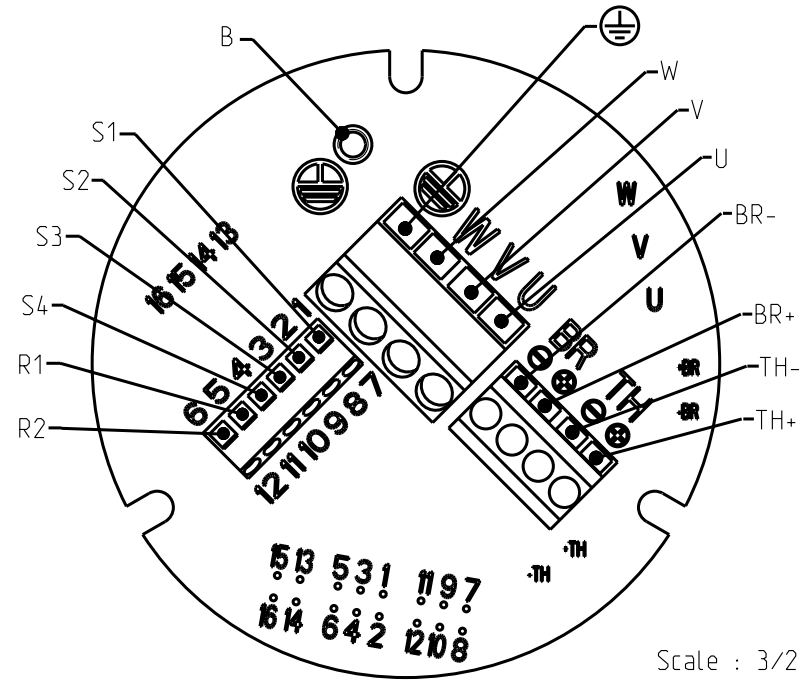


PRINTED CIRCUIT (under the cap)

- U : Phase U
- V : Phase V
- W : Phase W
- TH- : Thermic protector
- TH+ : Thermic protector
- BR- : Brake -
- BR+ : Brake +
- S1 : Resolver 1
- S2 : Resolver 2
- S3 : Resolver 3
- S4 : Resolver 4
- R1 : Resolver 5
- R2 : Resolver 6
- B : Shield option (screw M4)
- : Ground



Scale : 3/2

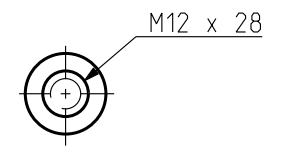


Protection II 2 G EEx d II B T4 :  
 \* EN 50014 : GENERAL RULES  
 \* EN 50018 : FLAMEPROOF "d"  
 Certification : INERIS 05ATEX0061X

DIMENSIONS

	EX820	EX840	EX860
L Maxi	325	385	445
B	295	355	415

SHAFT END



BRAKE

Supply voltage : 24V  $\pm 10\%$   
Static torque

	EX820	EX840	EX860
20°C	36 Nm	36 Nm	36 Nm
100°C	32 Nm	32 Nm	32 Nm

Drawing valid for : -

Weight :

This document is the property of PARVEX. Transmission as well as reproduction or copy is not permitted without written authorisation.

Drawn	20/05/05	SP	Visa					
Modifications								
a	AM 22090	12/09/05	SP					

Scale  
1:3

**SSD Parvex**  
 8 Avenue du lac. BP249  
 21007-DIJON cedex-FRANCE  
 www.parvex.com

EX800  
 OUTLINE DRAWING

Format	F	E	S	G	I	
A3	x	x				
344664AE1500						a