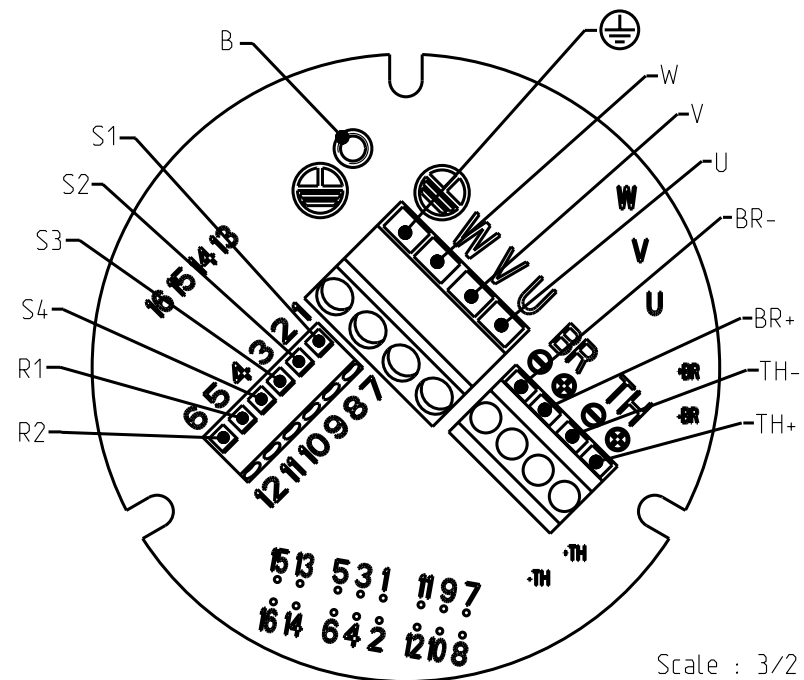


PRINTED CIRCUIT (under the cap)

- U : Phase U
- V : Phase V
- W : Phase W
- TH- : Thermic protector
- TH+ : Thermic protector
- BR- : No connection
- BR+ : No connection
- S1 : Resolver 1
- S2 : Resolver 2
- S3 : Resolver 3
- S4 : Resolver 4
- R1 : Resolver 5
- R2 : Resolver 6
- B : Shield option (screw M4)
- ⊕ : Ground



Protection II 2 G EEx d II B T4 :

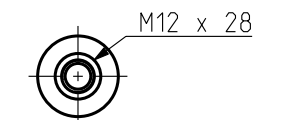
- \* EN 50014 : GENERAL RULES
- \* EN 50018 : FLAMEPROOF "d"

Certification : INERIS 05ATEX0061X

DIMENSIONS

	EX820	EX840	EX860
L Maxi	290	350	410
B	260	320	380

SHAFT END



Drawing valid for : -

Weight :	Drawn	18/05/05	SP	Visa						Scale 1:3	 <b>SSD Parvex</b> 8 Avenue du lac. BP249 21007-DIJON cedex-FRANCE www.parvex.com	EX800	Format	F	E	S	G	I	
		Modifications													A3	x	x		
This document is the property of PARVEX. Transmission as well as reproduction or copy is not permitted without written authorisation.												AM 22090 12/09/05 SP		OUTLINE DRAWING		344664AE1200			a