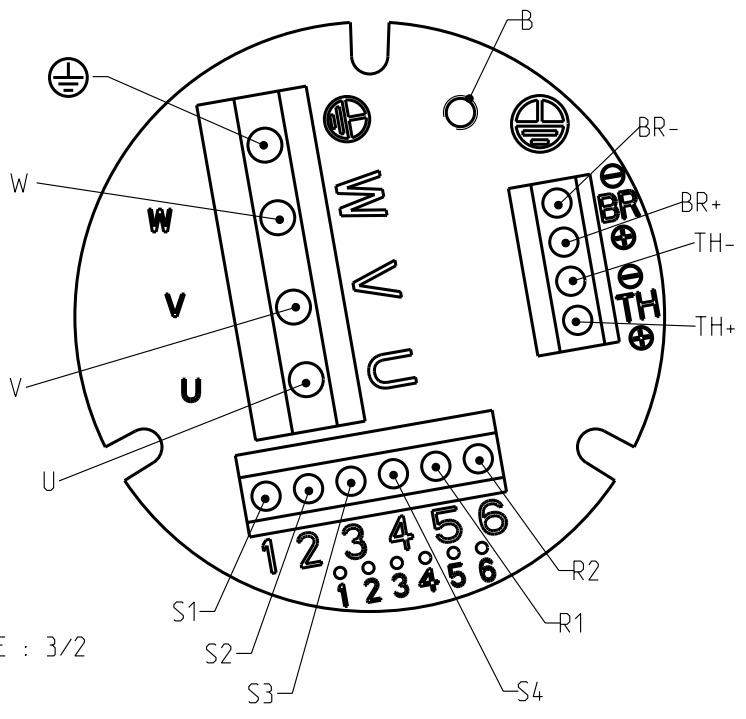


- U : Phase U
- V : Phase V
- W : Phase W
- TH- : Thermic protector
- TH+ : Thermic protector
- BR- : Brake-
- BR+ : Brake+
- S1 : Resolver 1
- S2 : Resolver 2
- S3 : Resolver 3
- S4 : Resolver 4
- R1 : Resolver 5
- R2 : Resolver 6
- B : Shield option (screw M3)
- ⊕ Ground

PRINTED CIRCUIT (under the cap)



Protection II 2 G EEx d II B T4 :

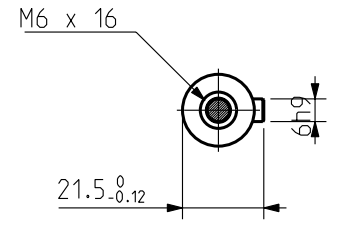
- * EN 50014 : GENERAL RULES
- * EN 50018 : FLAMEPROOF "d"
- * EN 50281-1-1 : COMBUSTIBLE DUST

Certification : INERIS 04ATEX0097X

DIMENSIONS

	EX420	EX430
L Maxi	290	315
B	265	290

SHAFT END



BRAKE

Supply voltage : 24V $\pm 10\%$

Static torque

	EX420	EX430
20 °C	6 Nm	6 Nm
100 °C	5 Nm	5 Nm

Drawing valid for : -

Weight :

This document is the property of PARVEX. Transmission as well as reproduction or copy is not permitted without written authorisation.

Drawn	18/07/05	OD	Visa					
Modifications								

Scale
1:2



EX400

OUTLINE DRAWING

Format	F	E	S	G	I	
A3	x	x				
344619AE1501 -						