

Signal output
Output wires inside
Ø7 PVC sheath
Overall shielding
connected to ground
Wire, shielding, sheath:
length 1000 mm
Ends not stripped

Power output
Output wires inside
Ø9 PVC sheath
Overall shielding
connected to ground
Wire, shielding, sheath:
length 1000 mm
Ends not stripped

POWER : 4 x 0.5 mm²

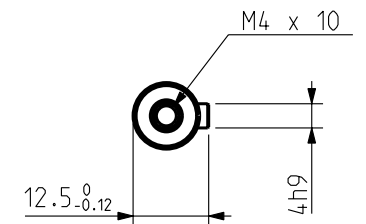
black : phase U
white : phase V
red : phase W
yellow/green : ground

SIGNAL : 6 x 0.08 mm², AWG28

red/white : R1 yellow : S2
yellow/white : R2 red : S3
black : S1 blue : S4

100°	*
20°	1 Nm
temp	Torque

SHAFT END



DIMENSIONS

	NX205	NX210
L Maxi	100	120
B	80	100

Drawing valid for :

Weight :

This document is the property of PARVEX. Transmission as well as reproduction or copy is not permitted without written authorisation.

Drawn	30/07/04	BB	Visa					
Modifications								
a	AM 21905 le 03/03/05 BB							

Scale
4:5

PARVEX
8 Avenue du lac. BP249
21007-DIJON cedex-FRANCE
www.parvex.com

NX200
OUTLINE DRAWING

Format	F	E	S	G	I		
A3	x	x					
344594AE4001							a