

POWER : 4 x 0.5 mm<sup>2</sup>

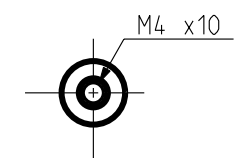
black : phase U  
white : phase V  
red : phase W  
yellow/green : ground

SIGNAL : 6 x 0.08 mm<sup>2</sup>, AWG28

red/white : R1      yellow : S2  
yellow/white : R2    red : S3  
black : S1          blue : S4

|      |        |
|------|--------|
| 100° | *      |
| 20°  | 1 Nm   |
| temp | Torque |

SHAFT END



DIMENSIONS

|        | NX205 | NX210 |
|--------|-------|-------|
| L Maxi | 100   | 120   |
| B      | 80    | 100   |

Drawing valid for :

Weight :

This document is the property of PARVEX. Transmission as well as reproduction or copy is not permitted without written authorisation.

|               |                         |    |      |  |  |  |  |  |
|---------------|-------------------------|----|------|--|--|--|--|--|
| Drawn         | 30/07/04                | BB | Visa |  |  |  |  |  |
| Modifications |                         |    |      |  |  |  |  |  |
| a             | AM 21905 le 03/03/05 BB |    |      |  |  |  |  |  |

Scale  
4:5

PARVEX  
8 Avenue du Lac. BP249  
21007-DIJON cedex-FRANCE  
www.parvex.com

NX200  
OUTLINE DRAWING

|              |   |   |   |   |   |  |   |
|--------------|---|---|---|---|---|--|---|
| Format       | F | E | S | G | I |  |   |
| A3           | x | x |   |   |   |  |   |
| 344594AE4000 |   |   |   |   |   |  | a |