

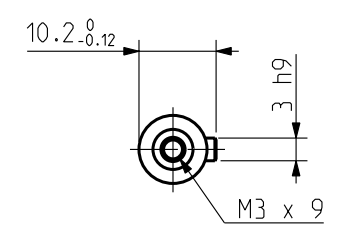
POWER : 4 x 0.5 mm<sup>2</sup>

black : phase U  
white : phase V  
red : phase W  
yellow/green : ground

SIGNAL : 6 x 0.08 mm<sup>2</sup>, AWG28

red/white : R1      yellow : S2  
yellow/white : R2    red : S3  
black : S1          blue : S4

SHAFT END



Weight :

This document is the property of PARVEX. Transmission as well as reproduction or copy is not permitted without written authorisation.

Drawn	09/11/04	PR	Visa					
Modifications								

Scale  
1:1

PARVEX  
8 Avenue du lac. BP249  
21007-DIJON cedex-FRANCE  
www.parvex.com

NX100  
OUTLINE DRAWING

Format	F	E	S	G	I
A3	x	x			
344581AE4001 -					