

Signal output
Output wires inside
Ø7 PVC sheath
Overall shielding
connected to ground
Wire, shielding, sheath:
length 1000 mm
Ends not stripped

Power output
Output wires inside
Ø9 PVC sheath
Overall shielding
connected to ground
Wire, shielding, sheath:
length 1000 mm
Ends not stripped

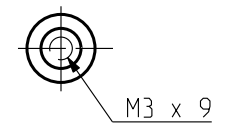
POWER : 4 x 0.5 mm²

black : phase U
white : phase V
red : phase W
yellow/green : ground

SIGNAL : 6 x 0.08 mm², AWG28

red/white : R1 yellow : S2
yellow/white : R2 red : S3
black : S1 blue : S4

SHAFT END



Weight :

This document is the property of PARVEX. Transmission as well as reproduction or copy is not permitted without written authorisation.

Drawn	09/11/04	PR	Visa						
Modifications									

Scale
1:1

PARVEX
8 Avenue du lac. BP249
21007-DIJON cedex-FRANCE
www.parvex.com

NX100
OUTLINE DRAWING

Format	F	E	S	G	I
A3	x	x			
344581AE4000 -					